

Proper Mounting Procedures For Passenger Car And Light Truck Tires

WARNING

Tire and rim mounting can be dangerous and must only be performed by trained professionals. Failure to comply with all these procedures may result in injury or death.

WARNING

Please use caution when working with any tire that is suspected to have been operated while underinflated or overloaded. Though it may be difficult to detect, any tire suspected of being operated at less than normal inflation pressure could have permanent damage to the sidewall. Damage to the sidewall can cause rapid pressure loss with explosive force. This can result in serious injury or death.

WARNING

Never, under any circumstance, use any sort of flammable substances to mount or seat the beads of a tire to the rim. Ignition of the substance can result in an explosion that can cause serious injury or death. Attempting to use a flammable substance to seat the beads may cause undetectable damage to the tire that can result in rapid tire failure if put into service.

WARNING

Never inflate the tire to more than 40 PSI (275 kPa) to seat the beads! Inflating beyond 40 PSI can damage the bead and the rim. This will result in a rapid release of explosive pressure that can result in injury or death. While seating the beads, do not stand, lean on, or reach over the assembly. Inspect both sides of the tire to ensure the beads are properly seated. If they have not seated, completely deflate the assembly, reposition and re-lubricate the tire, and inflate the tire to no more than 40 PSI (275 kPa) to seat the beads.

WARNING

Ensure the wheel diameter and the tire bead diameter are exactly the same (e.g. Do not attempt installing a 17 inch tire on a 17.5 inch rim). It is also important to only use rims that fit within the approved rim width range of the tire.



Proper Mounting Procedures For Passenger Car And Light Truck Tires

1) Prior to Mounting

- Inspect wheel for any sort of corrosion, cracks or pitting.
- Remove all cracked wheels from service. Cracked wheels are unsafe.
- Inspect the mating surfaces of the rim to ensure there is no build up of dirt that will prevent proper seating with tires and hubs.
- Inspect and prepare tire to be mounted.
- Ensure bead diameter of tire and rim are exactly the same.
- Never use tires that show signs of abuse such as run flat or road hazard damage.



2) Balance Markings

- Our tires are marked with white, yellow, red or blue dots on the sidewall.
- White dots indicate the lightest point on the tire. If the rim is not marked with a dimple, align the white dot with the valve stem. Following this will give you a good starting point for balancing the tires.
- Yellow dots indicate positive conicity and should have the marking facing outward when mounted on the vehicle.
- Red dots indicates the location of highest radial force on the tire. Typically Original Equipment (OE) spec rims will have a dimple on the rim that should be aligned with the red dot on the tire. This will assist with ease of balancing and limit any vibrations a tire and wheel assembly may produce at high speeds.
- Blue Dots are used to mark the lightest point of an OE tire. This should be aligned with the valve stem.



		WHITE ○	YELLOW ●	RED ●	BLUE ●
		REPLACEMENT	REPLACEMENT & OE	REPLACEMENT & OE	OE ONLY
PCR		STATIC BALANCE - LIGHT MASS	POSITIVE CONICITY	MAX RADIAL FORCE VARIATION	STATIC BALANCE - LIGHT MASS
	ACTION →	ALIGN VALVE STEM HERE	MOUNT THIS SIDE OUT	-	ALIGN VALVE STEM HERE

NOTES:

- 1) White and Yellow dots should be in the same side.
- 2) Some tires may not have markings.
- 3) LTR tires are only measured for Static Balance as indicated by a white dot.



If you have any questions please contact us at techservice@us.giti.com

GITI TIRE (USA), Ltd. 10404 Sixth Street - Rancho Cucamonga, CA 91730

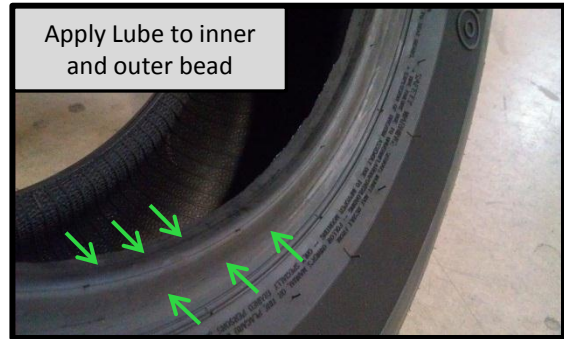
Tel: 1-866-488-4737 - Fax: 1-909-476-4028

www.gititireusa.com

Proper Mounting Procedures For Passenger Car And Light Truck Tires

3) Lubrication

- Proper tire mounting lubricant must be used.
- Never, under any circumstance, use a petroleum based lubricating agent.
- Lubricant must be added to the beads on the tire, the bead seats, and bead seat well on the wheel. This will prevent damage to the tire and assist with seating the beads.
- Do not add excess lubricant and keep it from pooling within the tire itself.



Be aware of the safety information printed on the tire label.

SAFETY WARNING

TO AVOID DEATH OR SERIOUS INJURY, USER SHOULD:

1. Never inflate beyond 40PSI (275kPa) to seat beads.
2. Tires should always be installed by qualified technicians following RMA installation procedures.
3. Never mount tires on rims which are damaged or not smooth and clean.
4. Never mount a tire with a torn bead.
5. Never inflate a tire that is lying on the floor or other flat surface.
6. Always use a tire mounting machine with hold-down device or safety cage, or bolt to vehicle axle.

8/25/2015

TS2015-GT-001

Proper Mounting Procedures For Passenger Car And Light Truck Tires

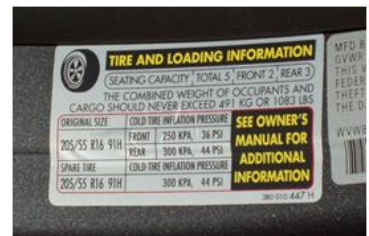
4) Mounting Procedure

- Ensure the wheel is secured to the machine as per the manufacturers recommendations.
- Clean and lubricate both bead seat areas and the bead seat well on the rim, as well as the entire bead area on the tire.
- Place the tire over the rim and position to mount the lower bead.
- Be aware of the TPMS sensor and mount the bottom bead with the traction point slightly behind the TPMS. The area where the tire bead crosses the rim flange is referred to as the traction point.
- Mount the lower and upper bead.
- After the tire has been mounted, align the tire with the red, yellow, white, or blue markings prior to seating the beads.
- Do not reuse valve stems and ensure the valve you are using is compatible with the rim being serviced.
- When seating the bead, never inflate the tire more than 40psi. If the tire does not seat at 40 psi, you must demount the tire and re-lubricate the beads and seating areas (see WARNING on page 1).



IMPORTANT

- **Check the vehicle manufacturer's recommendation for tire size, load capacity, inflation pressure, and speed rating.**
- **The recommended air pressure is defined by the vehicle manufacturer. It can be found in the driver's door frame and in the owner's manual.**
- **Never install a tire with a lower load capacity, speed rating, or a smaller size than the OE tire.**



For additional information please refer to RMA's Mounting and Demounting Procedures.



If you have any questions please contact us at techservice@us.giti.com

GITI TIRE (USA), Ltd. 10404 Sixth Street - Rancho Cucamonga, CA 91730

Tel: 1-866-488-4737 - Fax: 1-909-476-4028

www.gititireusa.com